

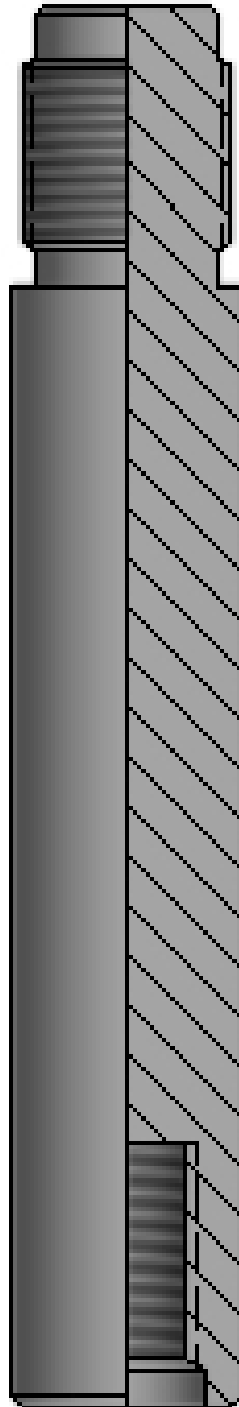


A SHANK

ASSEMBLY DESCRIPTION

The A Shank can be run by the C-1 Running Tool or any other internally threaded running tool. It is used to collapse the downward facing dogs on selective B & T S Locks, B & T W Locks, and B & T Z Locks.

The A Shank may also be used as a connection between the running tool and an A Prong.





A SHANK

SPECIFICATIONS				
	1.500	2.000	2.500	3.000
Maximum O.D.	0.698	0.832	1.161	1.411
Pin Connection	5/8"-11	3/4"-16	1"-14	1"-14
Bottom Connection	7/16"-14	1/2"-13	1/2"-13	5/8"-11
Length	4.750	5.000	4.688	5.313