



## BELL TYPE PACKOFF

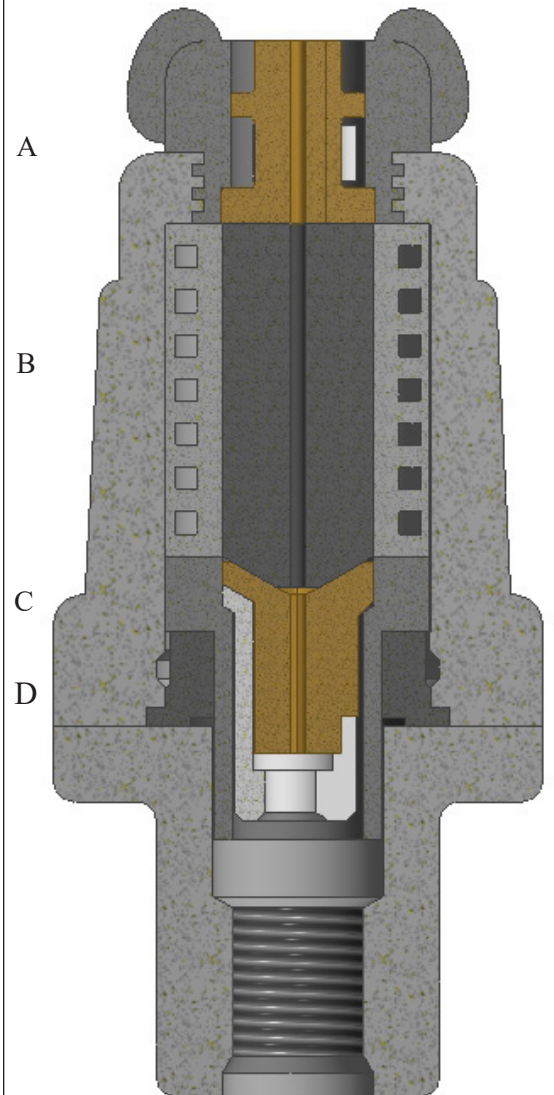
### ASSEMBLY DESCRIPTION

B & T manufactures the following components compatible with the Bell Type Packoff:

- A) OS9S BRASS UPPER BUSHING
- B) OS9S LINE WIPER
- C) OS9S BRASS LOWER BUSHING
- D) OS9S BRASS LOWER BUSHING CAGE

The OS9S Line Wipers are available in the full range of materials offered by B & T. Please consult the Elastomer Chart to find the proper compound for your specific application. The standard compound suitable for most applications is SBR/Natural 50.

Upper and lower metals are made from casted brass.

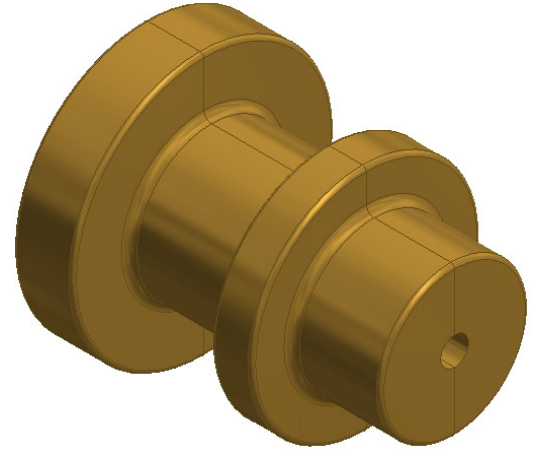




## OS9S BRASS UPPER BUSHING

### ASSEMBLY DESCRIPTION

O.D.            2.000"  
Height         2.460"



### SPECIFICATIONS

#### Bell Type Packoff Part: A

Part Number	Line Size	Material
OSUB-0002-15	3/16"	Casted Brass
OSUB-0003-15	7/32"	Casted Brass
OSUB-0004-15	1/4"	Casted Brass
OSUB-0005-15	9/32"	Casted Brass
OSUB-0006-15	5/16"	Casted Brass
OSUB-0008-15	3/8"	Casted Brass
OSUB-0009-15	7/16"	Casted Brass
OSUB-0010-15	15/32"	Casted Brass
OSUB-0011-15	1/2"	Casted Brass

All Specification Tables contain approximated dimensions and should be used for reference only.



# OS9S LINE WIPER

## ASSEMBLY DESCRIPTION

O.D. 2.000"  
Length 4.800"

Mold # -Line Size-Compound  
**0131-XXXX-XXXX**

When ordering the OS9S Line Wiper use the prefix **0131** and please specify: line size and compound. Example: 3/16" SBR/Natural 50 Duro would be part number **0131-0002-3105**



## SPECIFICATIONS

### Bell Type Packoff Part: B

Line Size	Line Size Part No.	Compound	SBR/Natural 50 Duro	HNBR 65 Duro	HNBR 80 Duro	FKM 70 Duro	Epichlorohydrin 70 Duro
3/16"	0002		3105	8465	0848	0707	1307
7/32"	0003		3105	8465	0848	0707	1307
1/4"	0004		3105	8465	0848	0707	1307
9/32"	0005		3105	8465	0848	0707	1307
5/16"	0006		3105	8465	0848	0707	1307
3/8"	0008		3105	8465	0848	0707	1307
7/16"	0009		3105	8465	0848	0707	1307
15/32"	0010		3105	8465	0848	0707	1307
1/2"	0011		3105	8465	0848	0707	1307

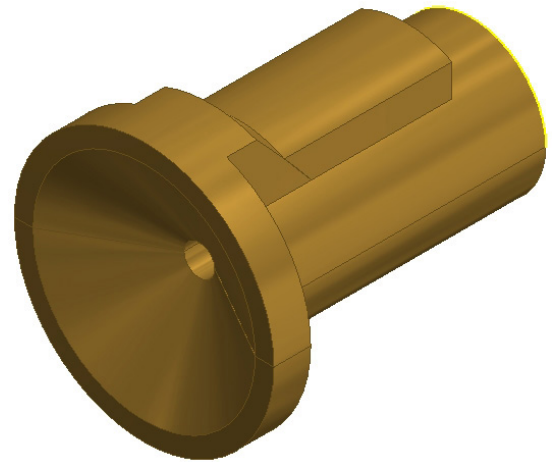
All Specification Tables contain approximated dimensions and should be used for reference only.



# OS9S BRASS LOWER BUSHING

## ASSEMBLY DESCRIPTION

O.D.            2.000"  
Length         2.560"



## SPECIFICATIONS

### Bell Type Packoff Part: C

Part Number	Line Size	Material
OSLB-0002-15	3/16"	Casted Brass
OSLB-0003-15	7/32"	Casted Brass
OSLB-0004-15	1/4"	Casted Brass
OSLB-0005-15	9/32"	Casted Brass
OSLB-0006-15	5/16"	Casted Brass
OSLB-0008-15	3/8"	Casted Brass
OSLB-0009-15	7/16"	Casted Brass
OSLB-0010-15	15/32"	Casted Brass
OSLB-0011-15	1/2"	Casted Brass

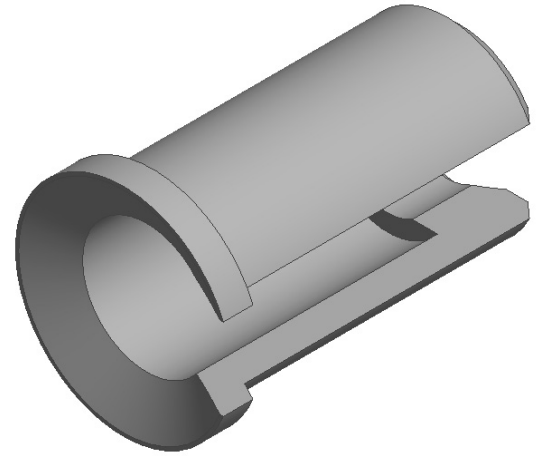
All Specification Tables contain approximated dimensions and should be used for reference only.



# OS9S BRASS LOWER BUSHING CAGE

## ASSEMBLY DESCRIPTION

O.D.	2.000"
Length	3.125"



## SPECIFICATIONS

Bell Type Packoff Part: D

Part Number	Line Size
OS9S Lower Bushing Cage	1018

All Specification Tables contain approximated dimensions and should be used for reference only.