



## CROSSOVER

### ASSEMBLY DESCRIPTION

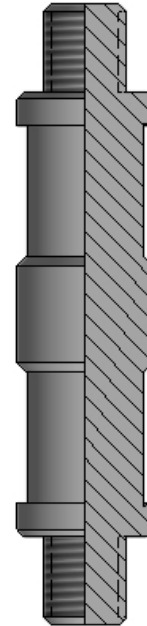
The B & T Crossover is used to connect two tool string items together when the items do not have similar connection styles or sizes. B & T Crossovers have a central body, with one of the following variations of its top and lower sub:

- Pin to Box
- Box to Box
- Pin to Pin

Crossovers may have but are not limited to having the following connections:

- 1-1/2", 1-7/8", 2-1/2", and 2-1/8" QLS
- 5/8", 15/16", 1-1/16", and 1-9/16" Sucker Rod
- Drain Rod connections
- Amerada connections

Pin X Pin Crossover



Pin X Box Crossover

