



HLWB OPEN HOLE PACKOFF

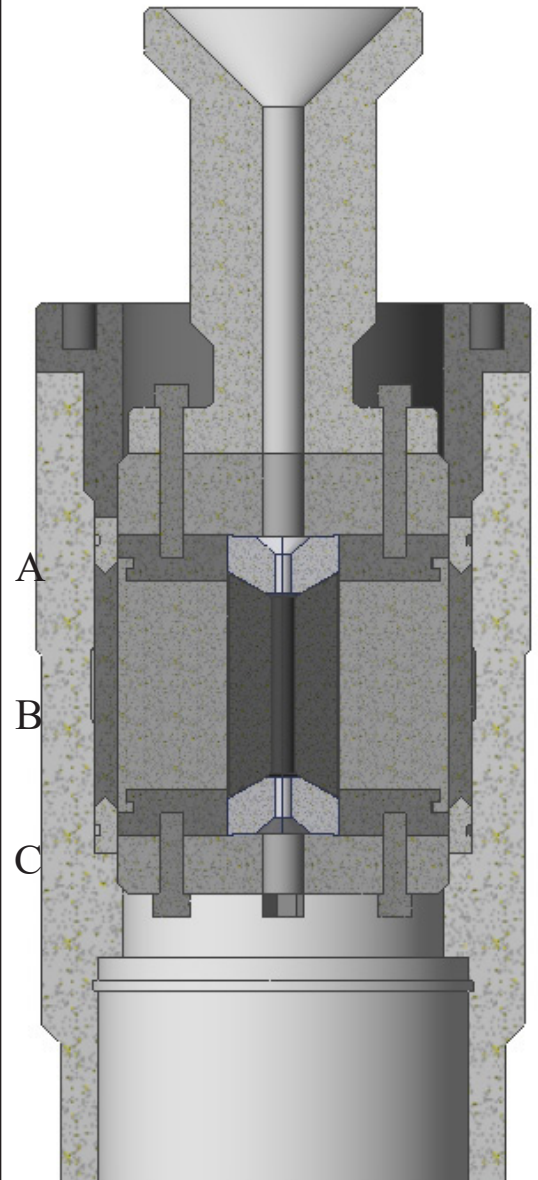
ASSEMBLY DESCRIPTION

B & T manufactures the following components compatible with the HLWB Open Hole Packoff:

- A) HLWB PTFE
- B) HLWB PACKOFF RUBBER
- C) HLWB PTFE

Upper and Lower HLWB PTFE are sold in numbered, matched sets to ensure true line size and seal. Please note, to order an entire HLWB PTFE redress, you will need (2) complete sets, one upper and one lower.

HLWB Packoff Rubbers are available in the full range of materials offered by B & T. Please consult the Elastomer Chart to find the proper compound for your specific application. The standard compound suitable for most applications is NBR 80.





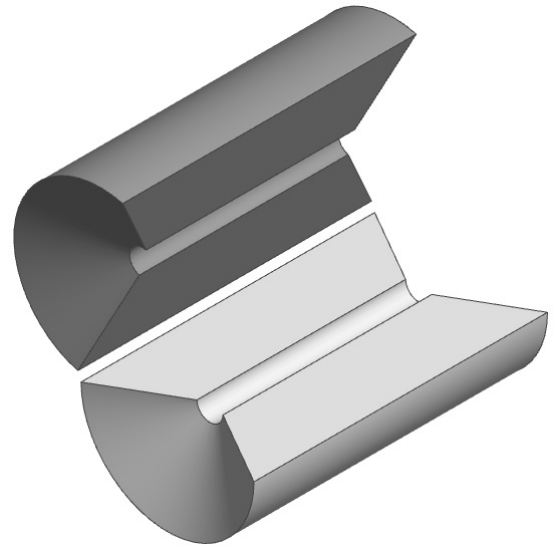
HLWB PACKOFF RUBBER

ASSEMBLY DESCRIPTION

O.D. 2.300"
Length 4.800"

Mold # -Line Size-Compound
0028-XXXX-XXXX

When ordering the HLWB Packoff Rubber use the prefix **0028** and please specify: line size and compound. Example: 3/8" NBR 80 Duro would be part number **0028-0008-0808**



SPECIFICATIONS

HLWB Open Hole Packoff Parts: A and C

Line Size	Line Size Part No.	Compound	NBR 80 Duro	HINBR 65 Duro	HINBR 80 Duro	FKM 80 Duro	Epichlorohydrin 70 Duro
3/8"	0008		0808	8465	0848	0708	1307
1/2"	0011		0808	8465	0848	0708	1307
9/16"	0013		0808	8465	0848	0708	1307

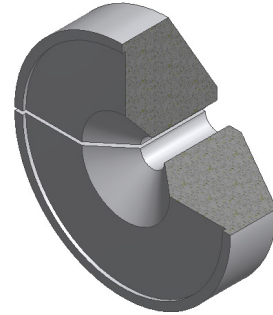
All Specification Tables contain approximated dimensions and should be used for reference only.



HLWB PTFE

ASSEMBLY DESCRIPTION

O.D. 2.430"
Length 1.290"



1/4 Cutaway View

SPECIFICATIONS

HLWB Open Hole Packoff Part: B

Part Number	Line Size	Material
HLBT-0008-14	3/8"	PTFE
HLBT-0011-14	1/2"	PTFE
HLBT-0013-14	9/16"	PTFE

All Specification Tables contain approximated dimensions and should be used for reference only.