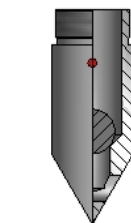
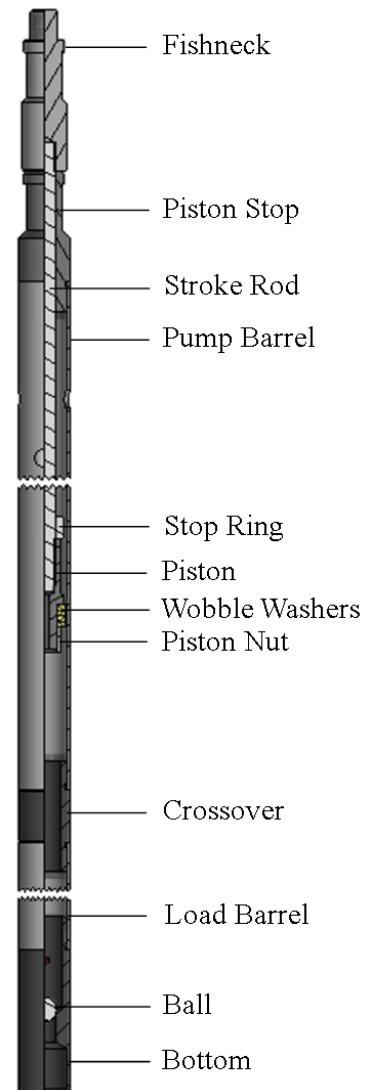




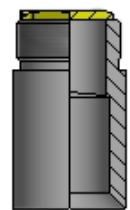
SAND BAILER / PUMP BAILER

ASSEMBLY DESCRIPTION

The Sand Bailer / Pump Bailer is a 2 piece pump action bailer, designed to remove sand and small debris in the tubing string through the upward stroking motion of the pump section. Debris is sucked into the Load Barrel as the assembly is jarred up. The main distinguishing component of the Sand Bailer / Pump Bailer is its Wobble Washer.



Chisel Bottom



Flapper Bottom



SAND BAILER / PUMP BAILER

SPECIFICATIONS				
	1.000	1.250	1.375	1.500
Fishneck	0.875	1.188	1.188	1.188
Connection	5/8"-11	15/16"-10	15/16"-10	15/16"-10

SPECIFICATIONS				
	1.625	1.750	2.000	2.125
Fishneck	1.375	1.375	1.375	1.375
Connection	15/16"-10	15/16"-10	15/16"-10	15/16"-10

SPECIFICATIONS				
	2.250	2.500	3.000	3.250
Fishneck	1.375	1.750	1.750	1.750
Connection	15/16"-10	1-1/16"-10	1-1/16"-10	1-1/16"-10

All Specification Tables contain approximated dimensions and should be used for reference only.